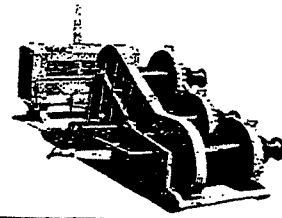
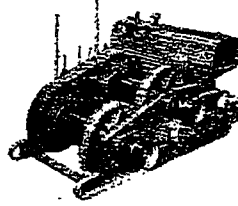
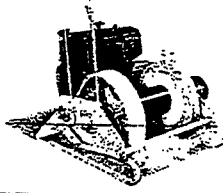


CONMACO[®]

SPECIFICATIONS

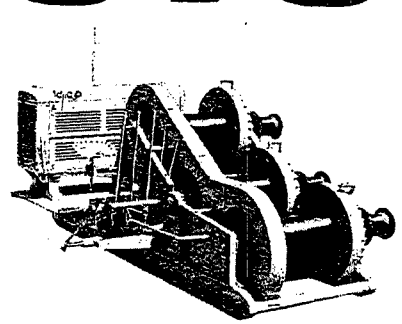
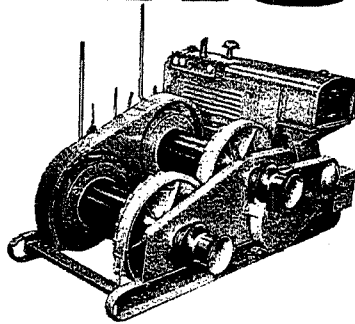
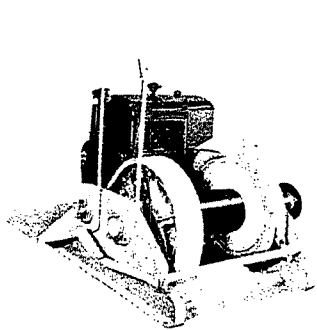


	SINGLE DRUM					DOUBLE DRUM					TRIPLE DRUM				
	MODEL 30B	MODEL 50B	MODEL 70B	MODEL 90B	MODEL 120B	MODEL 30B	MODEL 50B	MODEL 70B	MODEL 90B	MODEL 120B	MODEL 30B	MODEL 50B	MODEL 70B	MODEL 90B	MODEL 120B
Line Pull — 2nd Layer	3000	5000	7000	9000	12000	3000	5000	7000	9000	12000	3000	5000	7000	9000	12000
Rope Capacity/Drum — 3/8"	1200'	2140'	N/A	N/A	N/A	1200'	2140'	N/A	N/A	N/A	1200'	2140'	N/A	N/A	N/A
Rope Capacity/Drum — 1/2"	600'	1200'	1600'	2800'	N/A	600'	1200'	1600'	2800'	N/A	600'	1200'	1600'	2800'	N/A
Rope Capacity/Drum — 5/8"	N/A	N/A	980'	1740'	2600'	N/A	N/A	980'	1740'	2600'	N/A	N/A	980'	1740'	2600'
Rope Capacity/Drum — 3/4"	N/A	N/A	N/A	1200'	1900'	N/A	N/A	N/A	1200'	1900'	N/A	N/A	N/A	1200'	1900'
Drum Brake Diameter	20"	23"	25"	28"	32"	20"	23"	25"	28"	32"	20"	23"	25"	28"	32"
Drum Brake Width	2.2"	2.6"	3.1"	3.5"	4.0"	2.2"	2.6"	3.1"	3.5"	4.0"	2.2"	2.6"	3.1"	3.5"	4.0"
Drum Clutch Diameter	15"	18"	20"	24"	28"	15"	18"	20"	24"	28"	15"	18"	20"	24"	28"
Drum Clutch Width	2.0"	2.9"	3.5"	3.8"	4.2"	2.0"	2.9"	3.5"	3.8"	4.2"	2.0"	2.9"	3.5"	3.8"	4.2"
Length (Less Power)	57"	68"	O/R	O/R	O/R	74"	87"	91"	108"	127"	O/R	O/R	121"	141"	176"
Width (Less Power)	47"	54"	O/R	O/R	O/R	50"	56"	76"	85"	93"	O/R	O/R	78"	84"	94"
Height (Less Power)	47"	48"	O/R	O/R	O/R	56"	51"	43"	53"	59"	O/R	O/R	49"	60"	68"
Weight in Lbs. (Less Power)	790	1125	O/R	O/R	O/R	1300	1900	3125	4400	6040	O/R	O/R	4525	6475	9000

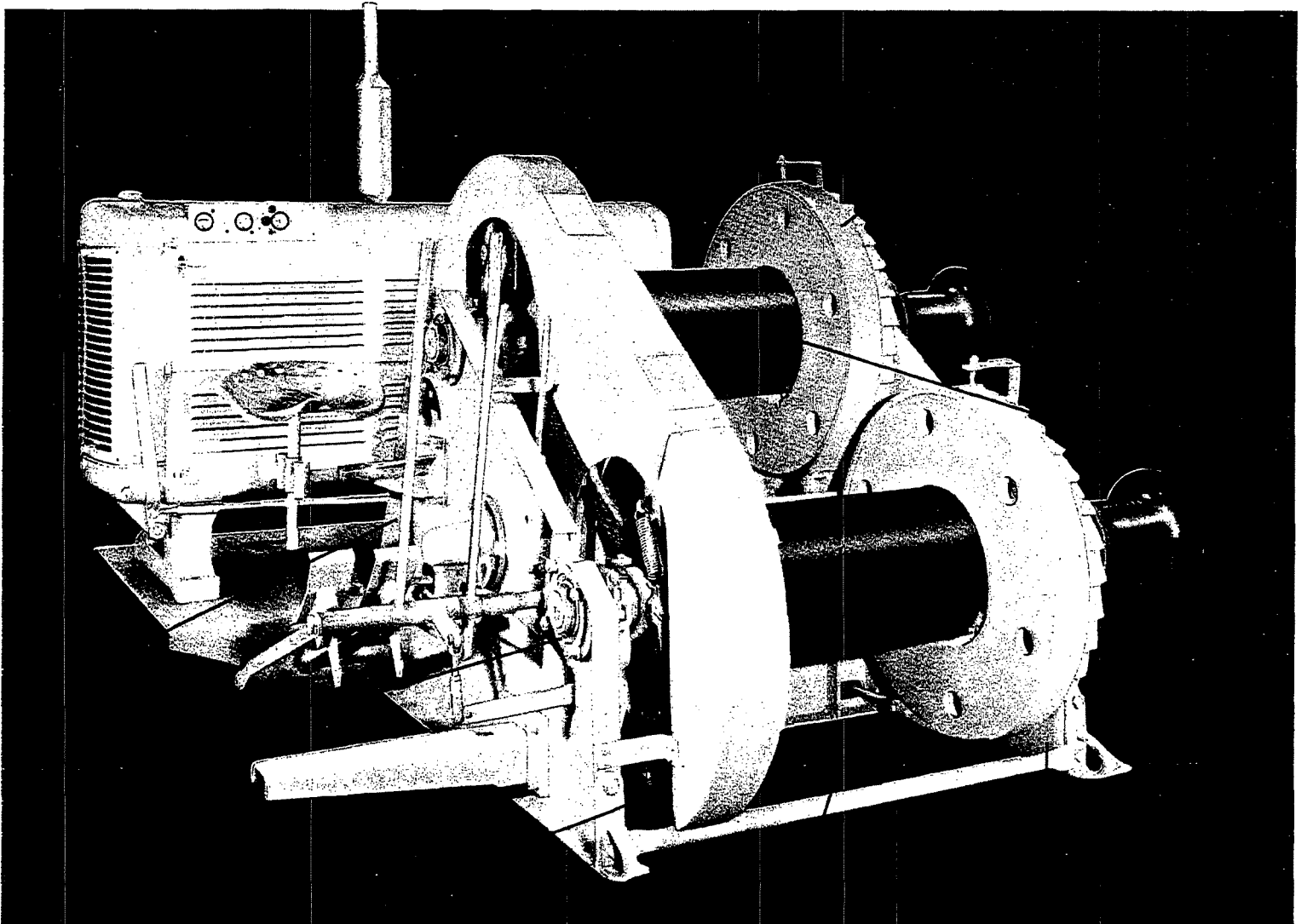
O/R means "On Request"

CONMACO / RECTOR, L.P.
1602 ENGINEERS ROAD
BELLE CHASSE, LA 70037
TEL. 504-394-7330 / FAX 504-393-8715
WWW.CONMACO.COM / sales@conmaco.com

hoist inc. HOISTS



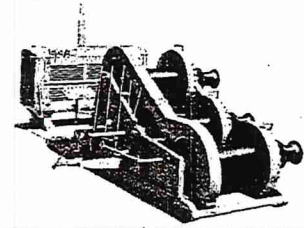
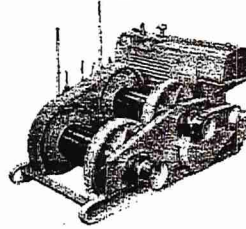
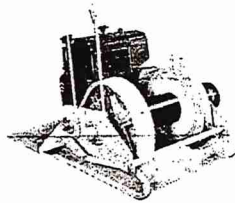
SINGLE...DOUBLE....TRIPLE DRUM



hoist inc.

4105 May Street, Hillside, Illinois 60162

SPECIFICATIONS



	SINGLE DRUM					DOUBLE DRUM					TRIPLE DRUM				
	MODEL 30B	MODEL 50B	MODEL 70B	MODEL 90B	MODEL 120B	MODEL 30B	MODEL 50B	MODEL 70B	MODEL 90B	MODEL 120B	MODEL 30B	MODEL 50B	MODEL 70B	MODEL 90B	MODEL 120B
Line Pull — 2nd Layer	3000	5000	7000	9000	12000	3000	5000	7000	9000	12000	3000	5000	7000	9000	12000
Rope Capacity/Drum — 3/8"	1200'	2140'	N/A	N/A	N/A	1200'	2140'	N/A	N/A	N/A	1200'	2140'	N/A	N/A	N/A
Rope Capacity/Drum — 1/2"	600'	1200'	1600'	2800'	N/A	600'	1200'	1600'	2800'	N/A	600'	1200'	1600'	2800'	N/A
Rope Capacity/Drum — 5/8"	N/A	N/A	980'	1740'	2600'	N/A	N/A	980'	1740'	2600'	N/A	N/A	980'	1740'	2600'
Rope Capacity/Drum — 3/4"	N/A	N/A	N/A	1200'	1900'	N/A	N/A	N/A	1200'	1900'	N/A	N/A	N/A	1200'	1900'
Drum Brake Diameter	20"	23"	25"	28"	32"	20"	23"	25"	28"	32"	20"	23"	25"	28"	32"
Drum Brake Width	2.2"	2.6"	3.1"	3.5"	4.0"	2.2"	2.6"	3.1"	3.5"	4.0"	2.2"	2.6"	3.1"	3.5"	4.0"
Drum Clutch Diameter	15"	18"	20"	24"	28"	15"	18"	20"	24"	28"	15"	18"	20"	24"	28"
Drum Clutch Width	2.0"	2.9"	3.5"	3.8"	4.2"	2.0"	2.9"	3.5"	3.8"	4.2"	2.0"	2.9"	3.5"	3.8"	4.2"
Length (Less Power)	57"	68"	0/R	0/R	0/R	74"	87"	91"	108"	127"	0/R	0/R	121"	141"	176"
Width (Less Power)	47"	54"	0/R	0/R	0/R	50"	56"	76"	85"	93"	0/R	0/R	78"	84"	94"
Height (Less Power)	47"	48"	0/R	0/R	0/R	56"	51"	43"	53"	59"	0/R	0/R	49"	60"	68"
Weight in Lbs. (Less Power)	790	1125	0/R	0/R	0/R	1300	1900	3125	4400	6040	0/R	0/R	4525	6475	9000

0/R means "On Request"

CONMACO / RECTOR, L.P.
1602 ENGINEERS ROAD
BELLE CHASSE, LA 70037
TEL. 504-394-7330 / FAX 504-393-8715
WWW.CONMACO.COM / sales@conmaco.com

TYPICAL PERFORMANCE DATA 120B W/DETROIT DIESEL 4-71
W/TCD 357 TORQUE CONVERTER

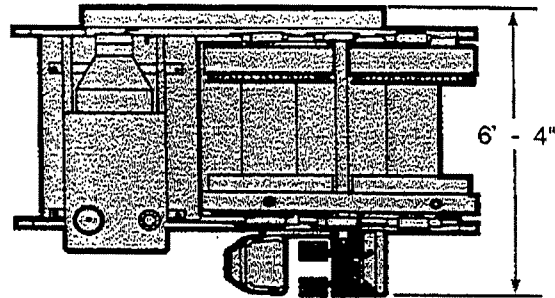
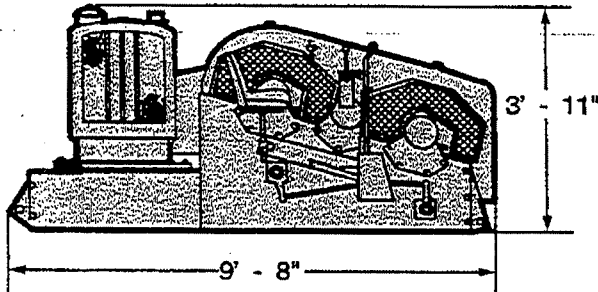
	<u>FULL</u>	<u>AVERAGE</u>	<u>FIRST</u>
Max RPM	4,023 @ 475	5,226 @ 365	7,462 @ 256
Coupling Speed	4,567 @ 364	5,933 @ 280	8,472 @ 196
Low 70%	8,842 @ 150	11,487 @ 115	16,400 @ 81
Stall	13,020	16,915	24,150

Maximum Hoist Rating:

12,000 SLP @ 200 FPM 2nd Layer.

SPECIFICATIONS

FRAME WINCH 5



DRUM DIMENSIONS:

Flange Diameter28"
 Drum Diameter12-1/2"
 Drum Length24"

SPOOLING CAPACITY:

1/2" Dia. Wire Rope3,950'
 5/8" Dia. Wire Rope2,520'
 3/4" Dia. Wire Rope1,750'

WEIGHT WITH STANDARD POWER:

(Approximate)
 Double Drum6,375 lbs
 Three Drum8,775 lbs

HOISTING/DERRICK SERVICE:

(5/8" Dia. Wire Rope)
 First Layer10,900 lbs
 12th Layer5,600 lbs

DRUM BRAKES:

Diameter28"
 Width4"
STATIC HOLDING POWER
 First Layer21,000 lbs

DRUM CLUTCH:

Diameter26-1/2"
 Width3"

CONTROL CONSOLE:

Available as manual seated or local stand-up type *(air)*.

PAINT:

Inorganic zinc with a finish coat of marine machinery epoxy.

PERFORMANCE DATA ANCHOR/MOORING SERVICE

	Full Drum Line Pull / Line Speed	Average Drum Line Pull / Line Speed	First Layer Line Pull / Line Speed
High 70%	3,536 @ 488	4,745 @ 364	6,628 @ 260
Maximum Efficiency	5,425 @ 298	7,280 @ 222	10,100 @ 159
Low 70%	7,093 @ 199	9,510 @ 148	13,295 @ 106
Stall	11,700 @ 0	15,800 @ 0	21,000 @ 0

Typical single-drum line pull in pounds and line speed in feet per minute. Performance data based on a Detroit Diesel, Model 3-53 diesel engine driving through an Allison single stage torque converter with 5/8" inch diameter wire rope.

This information is intended for preliminary comparison purposes only. All dimensions, weights, and performance figures are subject to change based on specific applications. Contact AmClyde for a detailed proposal.

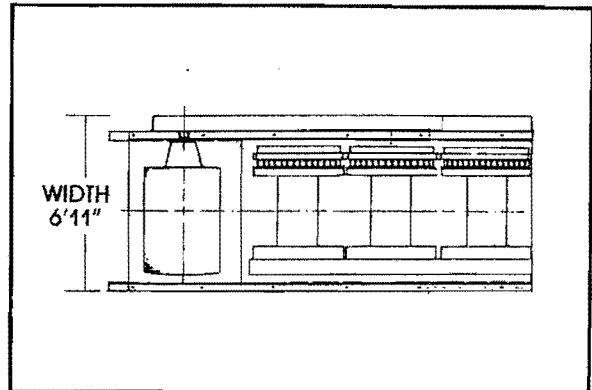
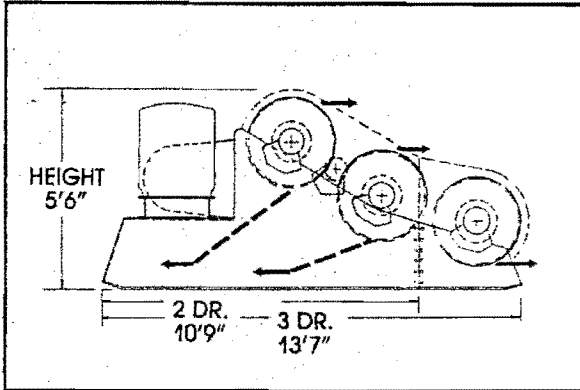
For further information, please contact the office nearest you:

1602 Engineers Road
 Belle Chasse, LA 70037
 Tel. 504-394-7330
 Fax 504-393-8715
 Email: sales@conmaco.com

14808 S. Cicero
 Oak Forest, IL 60452
 Tel. 708-926-9181
 Fax 708-926-9068
ddaniels@conmaco.com

1220 Alamoot Drive
 Chesapeake, VA 23322
 Tel. 757-285-9879
butch@conmaco.com

FRAME 6:



DRUM DIMENSIONS:	
Flange Diameter	34"
Drum Diameter	15"
Drum Length	27"
SPOOLING CAPACITY:	
2920' of 3/4" wire rope	
2150' of 7/8" wire rope	
1600' of 1" wire rope	
APPROXIMATE WEIGHTS WITH STANDARD POWER:	
Double Drum	9,275 lbs.
Three Drum	12,675 lbs.

DRUM BRAKES:	
Diameter	34"
Width	8"
Static Holding Power	
1st Layer	59,000 lbs.
DRUM CLUTCH:	
Diameter	32"
Width	3.5"
CONTROL CONSOLE:	
Available as manual seated or local stand-up type (air)	
PAINT:	
Inorganic zinc with a finish coat of marine machinery epoxy	

PERFORMANCE DATA ANCHOR/MOORING SERVICE

Typical single-drum line pull in pounds and line speed in feet per minute with a Detroit Diesel Model 3:53 driving through an Allison single stage torque converter.

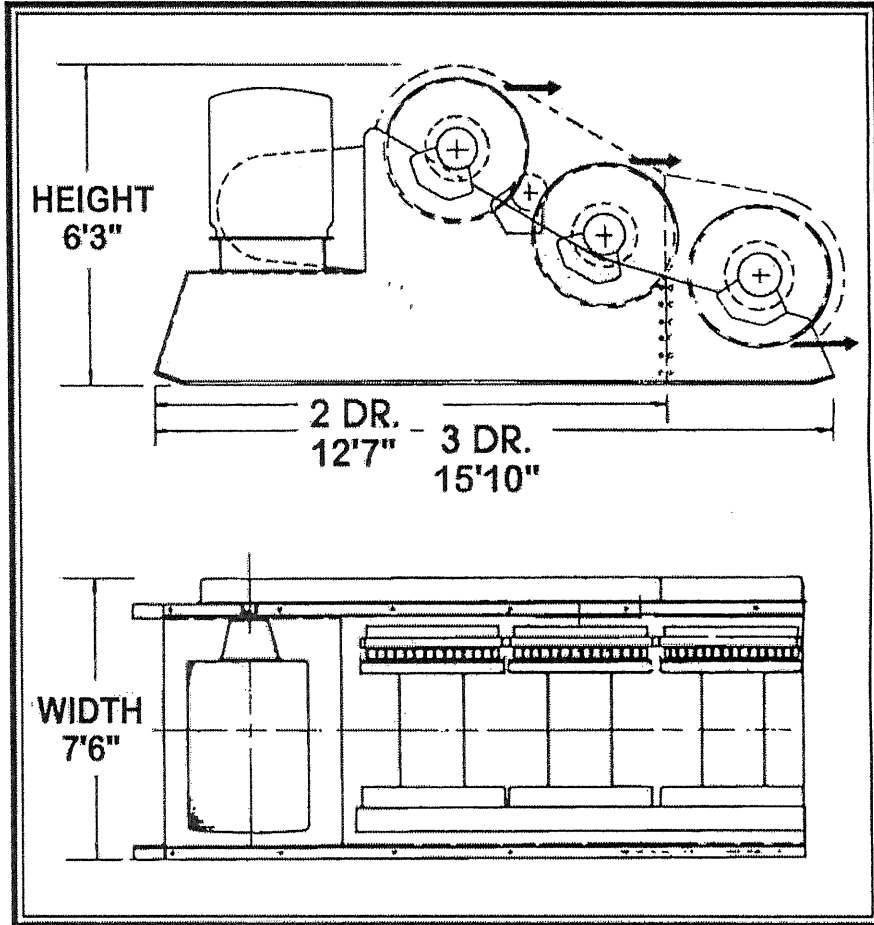
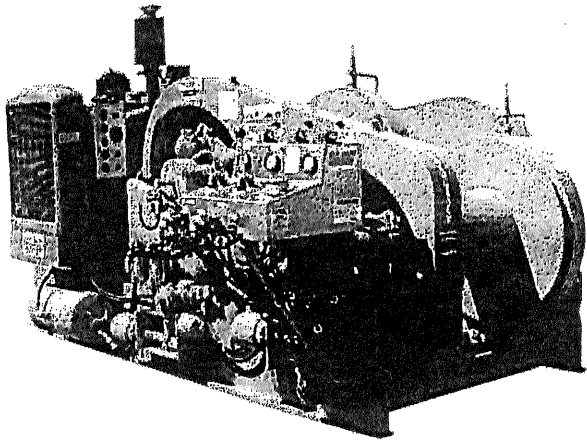
	FULL DRUM	AVG. DRUM	1st LAYER
80% Eff	7524 SLP @ 194 fpm	9811 SLP @ 149 fpm	15,162 SLP @ 97 fpm
70% Eff	9837 SLP @ 130 fpm	12,827 SLP @ 99 fpm	19,823 SLP @ 65 fpm
STALL	18,000 lbs.	23,480 lbs.	36,000 lbs.

HOISTING/DERRICK SERVICE

1st Layer 16,430 lbs. SLP through 8,410 lbs. SLP Full Drum

Clyde Frame 7 Specifications (Air Controlled)

Used Diesel Mechanical Rental Winches



• Drum Size

- Flange diameter (inches) 40
- Barrel diameter (inches).....17.5
- Barrel length (inches) 30

• Cable Capacity

- 3/4 inch (length in feet) 4,520
- 7/8 inch (length in feet) 3,310
- 1 inch (length in feet) 2,540

Using wire rope larger or smaller than what the winch was designed for could cause serious damage to the winch, operator, ratchets & personnel.

• Maximum Cable Size

- Diameter (inches)..... 1

• Approximate Weight

- Double-drum—standard (pounds) ... 12,700

Performance

Typical single drum line pull in pounds and line speed in feet-per-minute with a Detroit Diesel Model 4:53 driving through an Allison single stage torque converter.

SINGLE DRUM PERFORMANCE			
Efficiency Range	Pitch Diameter		
	1st Layer	Average Drum	Full Drum
80% Eff	18,500 SLP @ 120 FPM	11,950 SLP @ 186 FPM	8,790 SLP @ 252 FPM
70% Eff	24,370 SLP @ 80 FPM	15,640 SLP @ 125 FPM	11,550 SLP @ 168 FPM
Stall	41,500 LBS	27,305 LBS	20,165 LBS

Hoisting / Derrick Service

1st Layer 21,900 lbs. SLP through 10,700 lbs. SLP Full Drum

Note: Line speed and pull performance on our entire rental fleet is estimated on manufacturer specifications. Consult manufacturer for exact line speeds and pulls.

IMPORTANT

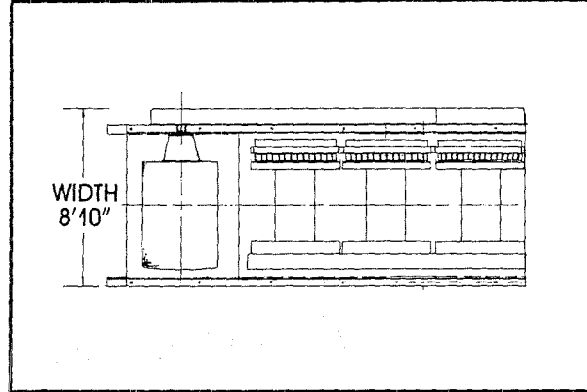
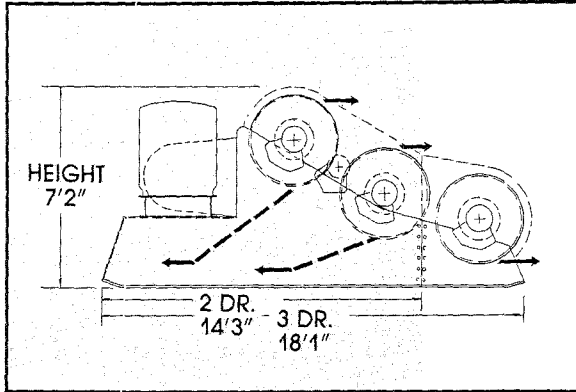
Before installation see maintenance and operations manual for additional warnings and precautions.

This equipment is not to be used for lifting supporting or transporting people or lifting or supporting loads over people.

All quotes are subject to product's availability, prior sale or other disposition. All details are believed correct, but without guarantee. Product quoted present location unless otherwise stated above or mutually agreed upon.



FRAME 8:



DRUM DIMENSIONS:
 Flange Diameter 45"
 Drum Diameter 20"
 Drum Length 32"

SPOOLING CAPACITY:
 3400' of 1" wire rope
 2690' of 1-1/8" wire rope
 2180' of 1-1/4" wire rope

APPROXIMATE WEIGHTS WITH STANDARD POWER:
 Double Drum 18,200 lbs.
 Three Drum 26,225 lbs.

DRUM BRAKES:
 Diameter 45"
 Width 10"
 Static Holding Power
 1st Layer 88,000 lbs.

DRUM CLUTCH:
 Diameter 42"
 Width 5"

CONTROL CONSOLE:
 Local stand-up type (air)

PAINT:
 Inorganic zinc with a finish coat of marine machinery epoxy

PERFORMANCE DATA ANCHOR/MOORING SERVICE

Typical single-drum line pull in pounds and line speed in feet per minute with a Detroit Diesel Model 4:71 driving through an Allison single stage torque converter.

	FULL DRUM	AVG. DRUM	1st LAYER
80% Eff	13,365 SLP @ 208 fpm	18,020 SLP @ 148 fpm	27,330 SLP @ 98 fpm
70% Eff	15,884 SLP @ 147 fpm	21,415 SLP @ 110 fpm	32,480 SLP @ 72 fpm
STALL	26,816 lbs.	36,151 lbs.	53,500 lbs.

HOISTING/DERRICK SERVICE

1st Layer 28,500 lbs. SLP through 13,900 lbs. SLP Full Drum

CONMACO/RECTOR, L.P.

Model 045



The CONMACO Model 045 is a heavy duty air-controlled hoist engineered for lifting and mooring applications.

An engine-driven air compressor, air tank, stand-up local control console, and diesel fuel tank are furnished as standard equipment on the Model 045.

The Model 045 is just one example of how Continental Machine Co., Inc. uses their years of experience in the engineering and manufacturing of a complete line of quality construction equipment.

CONMACO[®]

*Depend on our Quality.
Benefit from our Experience.*

MODEL 045 SPECIFICATIONS

Drum Dimensions

Flange diameter	30"
Barrel diameter	14"
Drum length	28"

Spooling Capacity

3/4" Wire Rope	2281'
7/8" Wire Rope	1619'
1" Wire Rope	1302'

Brakes

Each drum is equipped with a single external contracting band type brake. The brake is air-actuated and complete with a spring set override / parking brake feature.

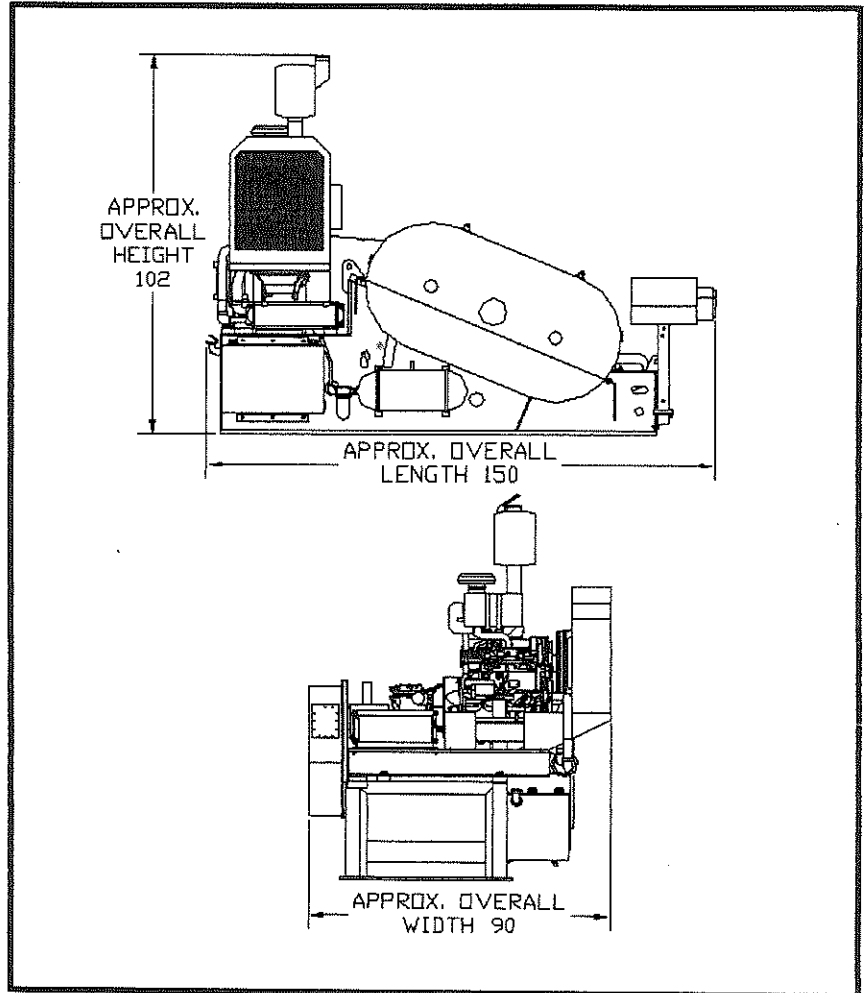
Static Rating First Layer – 46,500 lbs.

Clutch

Each drum is equipped with a multiple disc, air applied, spring released clutch.

Drum Dog

Each Drum is equipped with an air actuated Drum Dog.



Weight (with standard diesel power)

Double Drum 15,000 lbs

Paint

Winch Frame, guards and all sheet metal work are sandblasted and coated with inorganic zinc, with finish coats of polyurethane marine paint.

PERFORMANCE DATA

Theoretical single drum line pull in pounds and feet per minute with an electric starting diesel engine driving through a two speed transmission, using 1" wire rope.

	9th Layer	5th Layer	1st Layer
High 70 %	3,519 lbs. @ 566 fpm	9,645 lbs. @ 206 fpm	14,004 lbs. @ 142 fpm
Max. Eff.	5,780 lbs. @ 442 fpm	15,841 lbs. @ 161 fpm	23,001 lbs. @ 111 fpm
Low 70 %	15,468 lbs. @ 115 fpm	20,283 lbs. @ 111 fpm	29,451 lbs. @ 76 fpm
Stall	24,185 lbs.	31,714 lbs.	46,049 lbs.

For further information, please contact the office nearest you:

COPORATE HEADQUARTERS: 1602 Engineers Road, Belle Chasse, LA 70037, Tel. 504-394-7330, Fax 504-393-8715

E-mail: sales@conmaco.com

2100 Manchester Tfwy.
Kansas City, MO 64126

3036 Yadkin Road
Chesapeake, VA 23323

5152 W. 127th St.
Alsip, IL 60803